

# Key West 3-bed

**CAPACITY:** 6 people

**SURFACE AREA:** 40 m<sup>2</sup>

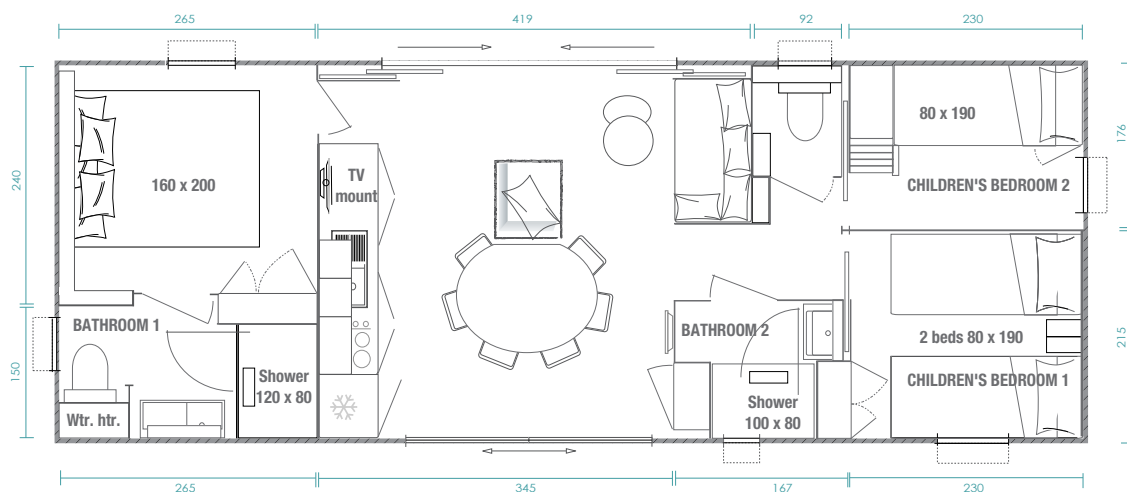
(usable interior floor area)

calculated using the UNIVDL guidelines

**DIMENSIONS:** 10.96 m x 4.25 m



Shown in Bronze wooden cladding



Created to combine with the Key West 1-bed, the 3-bed model with its big master suite and two children's/guest bedrooms, is a real ode to indoor-outdoor living. It offers a great deal of freedom in its configuration, thereby adapting to any plot.

# Key West 3-Bed standard fittings

## OUTSIDE:

Dune or Muscade wood-look cladding installed horizontally Anthracite grey sliding double doors at the front and extra large 4-pane retractable door at the rear  
2 LED outdoor lighting units  
External socket

## LIVING ROOM:

Large semi-open cupboard in the entrance  
Central island with built-in socket and 6 high stools  
White resin sink with drainer  
Top-of-the-range, ACS-certified mixer taps  
Stainless steel finish gas hob with 4 burners  
Built-in extractor hood  
179L built-in fridge-freezer  
TV mount  
Small bookshelf fitted with socket and lit by a wall light Almond-coloured woven cloth sofa in the alcove  
1 Mocha polyvinyl armchair with Almond cushion  
Two matching coffee tables  
1000W smart convector heater

## MASTER SUITE:

160x200 cm bed and headboard with built-in storage, bedside tables, reading lights and sockets  
Large built-in storage cupboard  
Full length hotel-style curtains  
Extra large 120x80 cm shower with ultra-flat tray and His & Hers shower columns  
90 cm wide wash basin wall unit with built-in storage spaces and towel rail  
Shelves with round mirror above  
Suspended dual flush WC and storage  
50L electric water heater

## CHILDREN'S BEDROOM

Two 80x190 cm beds and headboards with removable built-in bedside table, reading light and socket for each holiday-maker  
Large built-in storage cupboard  
Combination blackout blind and mosquito screen

## MEZZANINE CHILDREN'S BEDROOM

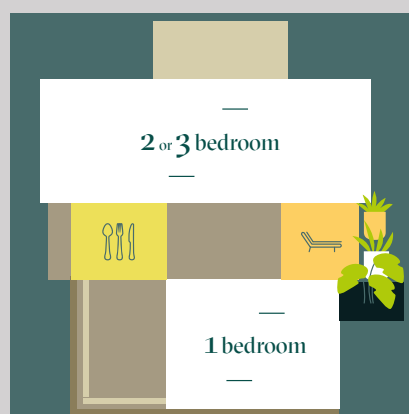
Lower bed with 80x190 cm base  
80x190 cm upper bed reached by steps  
Built-in wardrobe  
Recessed spotlights  
Combination blackout blind and mosquito screen

## BATHROOM/WC

100x80 cm shower with adjustable shower bar  
Wash basin wall unit with built-in storage and mirror  
Suspended dual flush WC and storage  
Closed technical cabinet and shelf  
Central circuit breaker



## We love the combined KW 3-bed



**Design the Key West to suit your camp site** with the help of the configurator programme, view your plot directly with your sales advisor.

View the Key West video at



## We love the options

- ♥♥ Wild Dune, Muscade in vertical installation. Grizzly, Grinoceros and Châtaigne cladding in vertical or horizontal
- ♥♥ Bronze wooden cladding
- ♥♥ Touch-control ceramic hob
- ♥♥ USB socket
- ♥♥ Heated towel rail
- ♥♥ Bultex mattress
- ♥♥ Mechanically-controlled ventilation
- ♥♥ Hair dryer
- ♥♥ Built-in microwave
- ♥♥ TV mount in the master bedroom