

3-bed models

AQUA 3



Heading for comfort!

We all see comfort differently, as all large families know! With 2 bathrooms, 3 bedrooms including a master suite, and a living room offering 4 distinct spaces: kitchen, living room, lounge and cloakroom, everything is designed to make everyone feel at home.



The Aqua 3 is shown with Muscade cladding on the front elevation.



38.60 m²*



6 persons



10.90 x 4.00 m



2 bathrooms

The TOP options

Bunk beds to provide space for a cot.

Dishwasher fittings.

USB socket in the living room and bedrooms.

* Overall dimensions. Usable interior floor area. Height 3.45 m

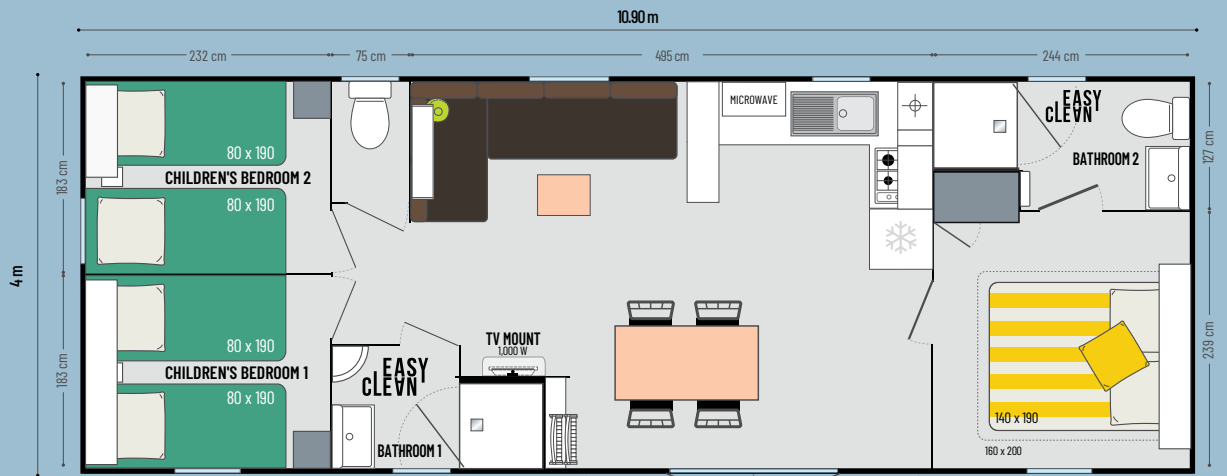
3-bed models **AQUA 3**



EXCEPTIONAL
WITH 2 BATHROOMS

The highlights

- + Entrance cloakroom
- + Large sofa seat width
- + Great 2.39m-wide master bedroom
- + 2 Easy Clean bathrooms



Kitchen with breakfast bar

- Microwave cabinet
- Deep pan drawers
- White 4-ring gas hob
- Fridge-freezer class A+, 2 doors, 207 litres, white
- Roller blind

Living room

- Roller blind
- Corner sofa with feet
- Coffee table
- Dining table with fixed wooden legs
- 4 black stackable inside/outside chairs
- 2 folding chairs
- Shelves
- TV mount

Master bedroom with bathroom access

- Open storage cabinet above the headboard
- Headboards
- Adjustable reading lights with built-in switch
- 2 removable bedside tables and wardrobe
- 18-slat bed base with raised legs and 35kg/m³ high-resistance foam mattress
- Blackout curtain



Children's/guest bedrooms

- Open storage cabinet above the headboard
- Round shelf unit in the front bedroom
- Bedside table
- Wall-mounted storage unit at the foot of the bed
- 18-slat bed base with raised legs and 35kg/m³ high-resistance foam mattress
- Blackout curtain

Bathrooms & toilets

- Easy Clean bathrooms that are easy to clean and designed to last
- 80x80cm soft-touch shower tray with extra-flat sill
- Frosted-glass shower door and window for more privacy
- Wall-mounted vanity unit with built-in towel rail and shelf
- Shelves
- Toilet with dual-flush system - 3/6 litres

Standard equipment

- Smoke detector with 10-year warranty
- 100% LED lighting
- 1000W convector heater
- 35kg/m³ high-resistance, OEKO-TEX-certified foam mattress
- High and low vents
- Phthalate-free linoleum
- Central circuit breaker
- Aerial socket and TV cabling
- Kitchen units on feet with PVC plinths
- Flow reducers on sink and washbasin mixer taps (7 L/min)
- Top-of-the-range, ACS-certified mixer taps
- Hydropower natural-draught gas water heater
- Environmental awareness sticker

Non-contractual document: descriptions, illustrations and photos are for guidance only.

IRM MOBILE-HOME RANGE 2021

BENETEAU Group Housing Division, Rue Charles Tellier, ZI de la Folie Sud, CS 80032, LA CHAIZE LE VICOMTE
85035 LA ROCHE SUR YON CEDEX, FRANCE - Tel. +33 (0)2 51 26 20 28 • mobil-home.com