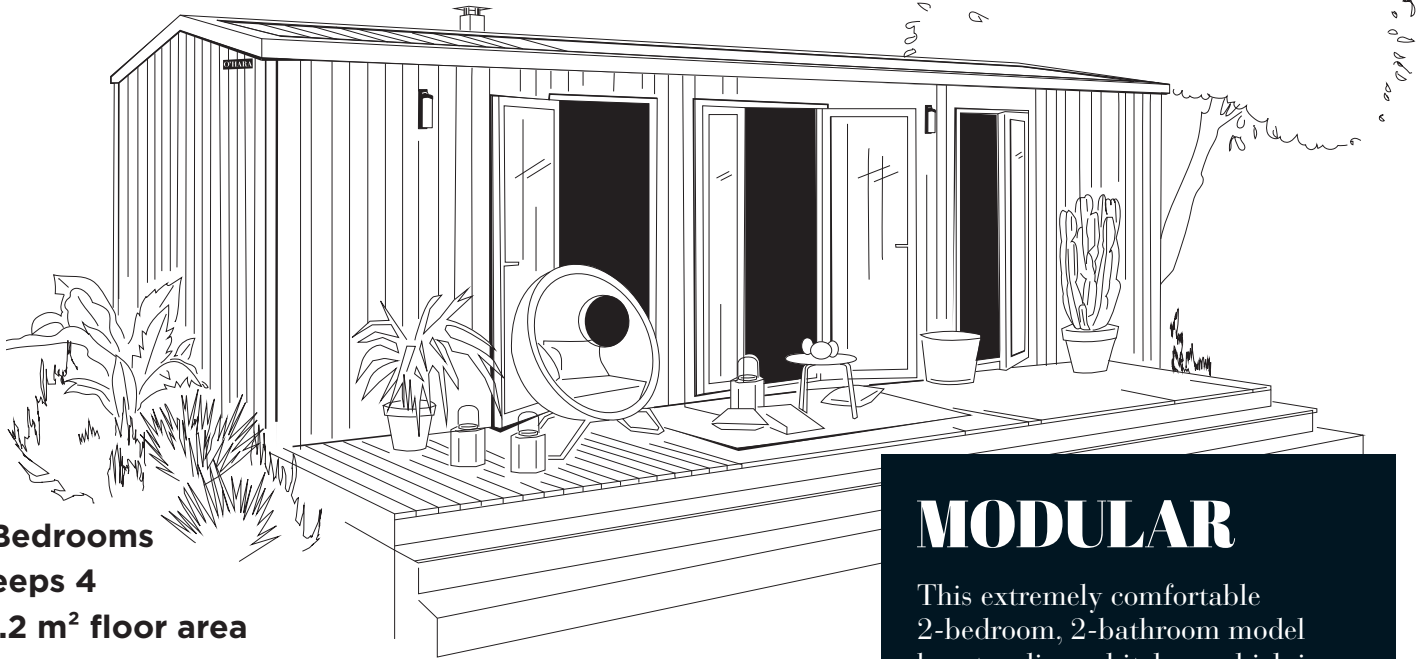


model

865 2-bed 2-bath

O'HARA



2 Bedrooms

Sleeps 4

33.2 m² floor area

8.75x4.3 m dimensions*

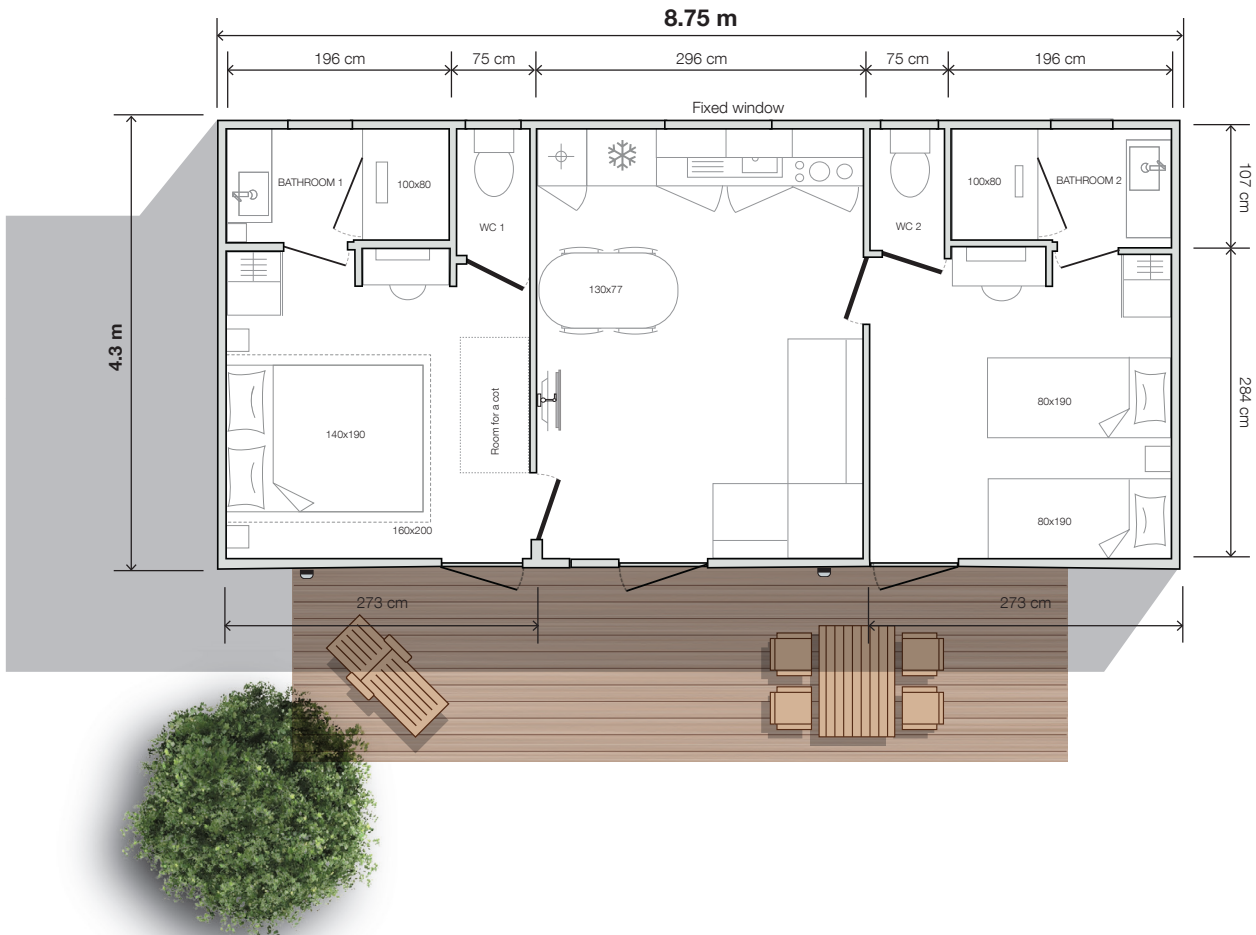
2.3 m interior height

3.52 m exterior height

MODULAR

This extremely comfortable 2-bedroom, 2-bathroom model boasts a linear kitchen, which is all the brighter thanks to a wide picture window! This model is ideal for families, and can be converted into two completely separate suites with the “hotel package” option.

*Overall dimensions and usable interior floor area.





Standard equipment

- 1,000 Watt intelligent electronic convector with digital display
- TV cabling
- High and low vents
- Hydropower boiler
- Central circuit breaker
- HR35 kg/m³ OEKO TEX-certified foam mattress
- Smoke detector with 10-year warranty
- Kitchen units with feet and PVC plinths
- Heavy duty, phthalate-free linoleum
- 207 L fridge-freezer
- 100% LED lighting
- Resin sink
- Top-of-the-range, ACS-certified plumbing fixtures with 7 L/min flow reducers
- Environmental awareness sticker

Kitchen

- Large capacity, tall storage units
- Base units with handles
- Built-in cooker hood
- Fridge-freezer/microwave unit
- Drawers with full-extension slides

Living room/lounge

- 130x77 cm oval table with 4 chairs
- Sofa with feet
- Pendant light
- Power socket with USB port
- TV mount



Master bedroom

- French windows with full-width blackout curtain
- Headboard with built-in bedside tables and sockets
- Pendant lights on both sides of the bed
- Large closet with hanging space
- Dressing table/desk with socket, mirror and seat
- 140x190 cm bed base, 18 slats
- En-suite shower room and separate WC
- Room for a cot

Children's/guest room

- French windows with blackout curtain
- 80x190 cm bed bases, 18 slats
- Bedside table and reading light
- Large wardrobe
- Dressing table/desk with socket, mirror and seat
- En-suite shower room and separate WC



Ultimate options

- Hotel package
- Heated towel rail in the bathrooms
- TV mount and full-length mirror in the master bedroom
- Smart music speaker

Data not contractually binding. The manufacturer reserves the right to modify its products at any time without notice. Decorative items, microwaves and televisions are not supplied with mobile homes.

Easy Clean bathrooms

- Vanity unit with XL round mirror
- Storage unit and wall-mounted light on master bedroom side
- 100x80 cm shower with extra-flat tray and tall glass door
- Adjustable shower riser rail
- Window with frosted glass
- Venetian blind
- Hairdryer in en suite bathroom
- Separate WC