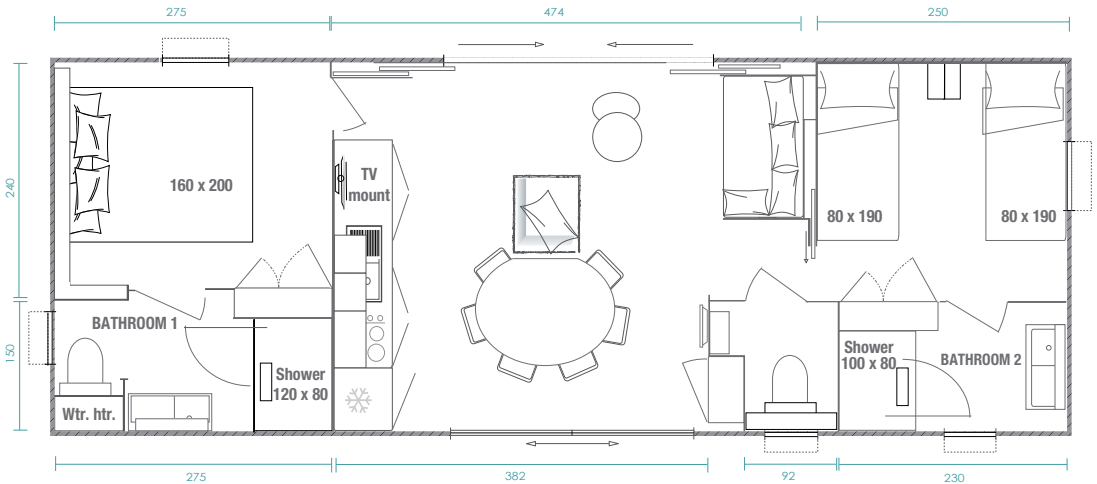


Key West 2-bed

CAPACITY: 4 people
SURFACE AREA: 40 m²
(usable interior floor area)
calculated using the UNIVDL guidelines
DIMENSIONS: 10.96m x 4.25m



Shown in Bronze wooden cladding



Created to combine with the Key West 1-bed, the 2-bed model, with its two parent and children/guest suites, is able to provide a level of comfort and fittings matching its sought-after premium positioning status.

Key West 2-Bed standard fittings

OUTSIDE:

Dune or Muscade wood-look cladding installed horizontally
Anthracite grey sliding double doors on front and extra large 4-pane retractable door at the rear
4 LED outdoor lighting units
External socket

LIVING ROOM:

Large semi-open cupboard in the entrance
Central island with built-in socket and 6 high stools
White resin sink with drainer
Top-of-the-range, ACS-certified mixer taps
Stainless steel finish gas hob with 4 burners
Built-in extractor hood
179L built-in fridge-freezer
TV mount
Small bookshelf fitted with socket and lit by a wall light
Almond-coloured woven cloth sofa in the alcove
1 Mocha polyvinyl armchair with Almond cushion
Two matching coffee tables
1000W smart convector heater



Shown with the touch control ceramic hob and built-in microwave option



MASTER SUITE:

160X200 cm bed and headboard with built-in storage, bedside tables, reading lights and sockets
Large built-in storage cupboard
Full length hotel-style curtains
Extra large 120x80 cm shower with ultra-flat tray and His & Hers shower columns
90 cm wide wash basin wall unit with built-in storage spaces and towel rail
Shelves with round mirror above
Suspended dual flush WC and storage
50L electric water heater

CHILDREN'S BEDROOM

Two 80x190 cm beds
Headboard with removable built-in bedside table, reading light and socket for each holiday-maker
Large built-in storage cupboard
Combination blackout blind and mosquito screen

BATHROOM/WC

100X80 cm shower with adjustable shower bar
Wash basin wall unit with built-in storage and mirror and shelf above
Suspended dual flush WC
Closed technical cabinet
Central circuit breaker

We love the
combined KW 2-bed



**Design the
Key West
to suit your
camp site**
with the help of the
configurator programme,
view your plot directly
with your sales advisor.

View
the KeyWest video
at



We love the options

♥♥ Wild Dune, Muscade in vertical installation
Grizzly, Grinceros and Châtaigne cladding in vertical or horizontal installation
♥♥ Bronze wooden cladding

♥♥ Touch-control ceramic hob
♥♥ USB socket
♥♥ Heated towel rail
♥♥ Bultex mattress
♥♥ Mechanically-controlled ventilation

♥♥ Hair dryer
♥♥ Built-in microwave
♥♥ TV mount in the master bedroom